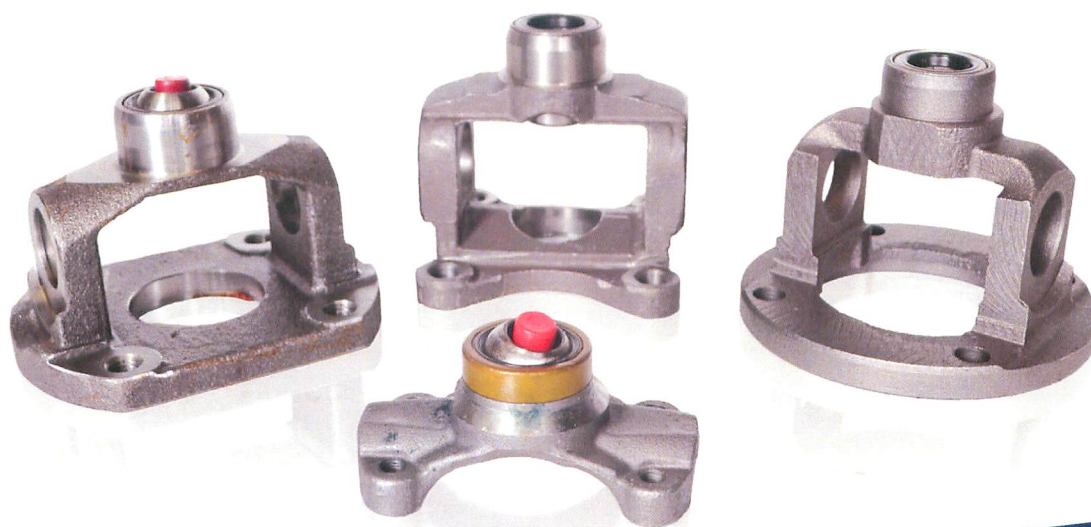


ROCKFORD DRIVELINE 

CV CENTERING ASSEMBLIES



***END / FLANGED / WELD
AND
REPAIR KITS***

How to Use This Section

Determine which type of stud yoke you need by referring to the illustrations and descriptions at the top of each page.

To identify a cv centering assembly (End Yoke Style)

1. Determine the series of the yoke. This can also be determined by measuring the bearing diameter (**A**) and snap ring lockup (**B**).
2. Determine the Yoke Type within the series. At the top of the page we illustrate the (2) two different type of end yoke style yokes, **Type 1** (uses external seal) or **Type 2** (uses internal seal).
3. Determine the socket diameter (**F**) or reference the Repair Kit number used in the assembly. This may prove to be more helpful in confirming your application.

Bolt Pattern Dimensions & Threaded Hole Size are also included for additional identification.

Part series are shown in **Bold Italics** for easy lookup - RDL Kit number is also shown to the far right of each series for quick referencing.

RDL Part No.	Yoke Type	A Bearing Dia.	B U-Joint Lockup	Bolt Hole Dim.			F Socket Dia.	Repair Kit
				C	D	E		
1310 Series								Use RDL Kit - K153
R2-21-1355	Type 1	1.063	3.217	2.343	1.500	.312-24Thd	.500	404-0

To identify a cv centering assembly (Flanged Yoke Style)

1. Determine the series of the yoke. This can also be determined by measuring the bearing diameter (**A**) and snap ring lockup (**B**).
*Note: Inside snap ring type yokes will show the B dimension followed by (I)
 Outside snap ring type yokes will show the B dimension followed by (O)*
2. Determine the Yoke Type within the series. At the top of the page we illustrate the (2) two different type of flanged yoke style yokes, **Type 1** (uses external seal) or **Type 2** (uses internal seal).

3. Determine the bolt pattern (**C & D**) and the bolt hole diameter (**E**)
4. Determine the socket diameter (**G**) or reference the *Repair Kit* number used in the assembly. This may prove to be more helpful in confirming your application.

Pilot Diameter & Centerline to Flange End are also included for additional identification.

Part series are shown in ***Bold Italics*** for easy lookup - RDL Kit number is also shown to the far right of each series for quick referencing.

RDL Part No.	Yoke Type	A Bearing Dia.	BO/BI U-Joint Lockup	Bolt Hole Dim.			F Pilot Dia.	G Socket Dia.	H CL to Flng End	Repair Kit
				C	D	E				

1350 Series

Use RDL Kit - K178

R2-21-2025	Type 2	1.188	3.622-O	3.000	3.000	M12x1.75	2.000-F	.500	1.625	404-0A
------------	--------	-------	---------	-------	-------	----------	---------	------	-------	--------

***To identify a cv centering assembly
(Weld Yoke Style)***

1. Determine the series of the yoke. This can also be determined by measuring the bearing diameter (**A**) and snap ring lockup (**B**).
2. Determine the hub diameter (**C**) or the socket diameter (**D**).
3. Determine the tube size (**E**) or the butt diameter (**F**).

Centerline to Weld & Repair Kit Number are also included for additional identification.

Part series are shown in ***Bold Italics*** for easy lookup - RDL Kit number is also shown to the far right of each series for quick referencing.

RDL Part No.	A Bearing Dia.	B U-Joint Lockup	C Hub Dia.	D Socket Dia.	E Fits Tube Size	F Butt Dia.	G CL to Weld	Repair Kit
--------------	----------------	------------------	------------	---------------	------------------	-------------	--------------	------------

2.5R Series

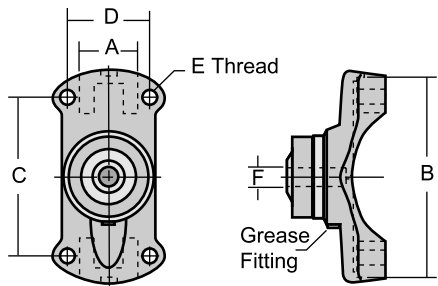
Use RDL Kit - K2532

R25-21-419	1.125	1.119	1.600	.470	65mm X 3mm	2.437	1.515	407-0
------------	-------	-------	-------	------	------------	-------	-------	-------

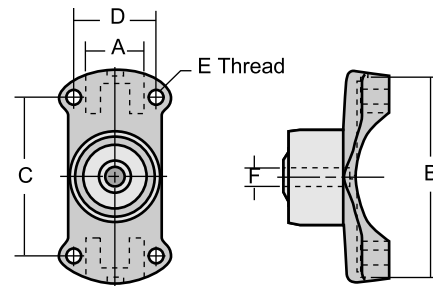
Notice: The data contained in this catalog has been thoroughly checked for accuracy, however we cannot assume any responsibility for errors, omissions or typographical mistakes that may appear.



CV CENTERING ASSEMBLY (End Yoke Style)



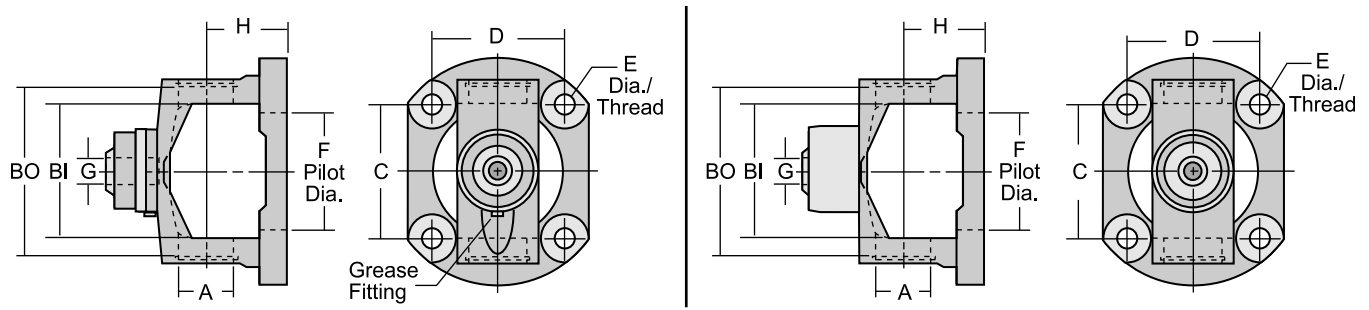
Type 1 (External Seal)



Type 2 (Internal Seal)

RDL Part No.	Yoke Type	A Bearing Dia.	B U-Joint Lockup	Bolt Hole Dim.			F Socket Dia.	Repair Kit
				C	D	E		
1210 Series				Use RDL Kit - K443				
R2-21-1342	Type 1	1.063	2.438	2.343	1.500	.250-28Thd	.500	404-0
1310 Series				Use RDL Kit - K153				
R2-21-1355	Type 1	1.063	3.217	2.343	1.500	.312-24Thd	.500	404-0
R2-21-1544	Type 2	1.063	3.217	2.343	1.500	.312-24Thd	.500	404-0A
1330 Series				Use RDL Kit - K1203 or K213				
R2-21-0841	Type 1	1.063	3.622	2.875	1.500	.312-24Thd	.625	405-0
R2-21-1179	Type 1	1.063	3.622	2.875	1.500	.312-24Thd	.500	404-0
R2-21-1996	Type 2	1.063	3.622	2.875	1.500	.312-24Thd	.500	404-0A
1350 Series				Use RDL Kit - K178				
R3-21-2019	Type 2	1.188	3.622	2.750	1.625	.312-24Thd	.500	404-0A

CV CENTERING ASSEMBLY (Flanged Yoke Style)



Type 1 (External Seal)

Type 2 (Internal Seal)

RDL Part No.	Yoke Type	A Bearing Dia.	BO/BI U-Joint Lockup	Bolt Hole Dim.			F Pilot Dia.	G Socket Dia.	H CL to Flng End	Repair Kit
				C	D	E				

1210 Series

Use RDL Kit - K443

R2-21-1489	Type 1	1.063	2.437-O	2.478	2.478	.484	2.000-F	.500	1.625	404-0
------------	--------	-------	---------	-------	-------	------	---------	------	-------	-------

1210 Series (You Drill It - No Holes)

Use RDL Kit - K443

R2-21-1489LH	Type 1	1.063	2.437-O	none	none	none	2.000-F	.500	1.625	404-0
--------------	--------	-------	---------	------	------	------	---------	------	-------	-------

1310 Series

Use RDL Kit - K153

R2-21-3517	Type 1	1.063	3.217-O	2.390	2.015	.406	2.375-M	.500	1.625	404-0
R2-21-1229	Type 1	1.063	3.217-O	2.478	2.478	.484	2.000-F	.500	1.625	404-0
R2-21-1543	Type 2	1.063	3.217-O	2.478	2.478	.484	2.000-F	.500	1.625	404-0A

1310 Series (You Drill It - No Holes)

Use RDL Kit - K153

R2-21-1229LH	Type 1	1.063	3.217-O	none	none	none	2.000-F	.500	1.625	404-0
R2-21-3123LH	Type 1	1.063	3.217-O	none	none	none	1.809-M	.500	1.625	404-0
R2-21-3162LH	Type 1	1.063	3.217-O	none	none	none	1.770-M	.500	1.625	404-0

1310 Series (Land Rover Conversions)

Use RDL Kit - K153

R2-21-3191	Type 1	1.063	3.217-O	2.642	2.642	.393	2.559-M	.500	1.625	404-0
------------	--------	-------	---------	-------	-------	------	---------	------	-------	-------

*OE is 1300 Series

1310 Series (Saginaw Conversions)

Use RDL Kit - K153

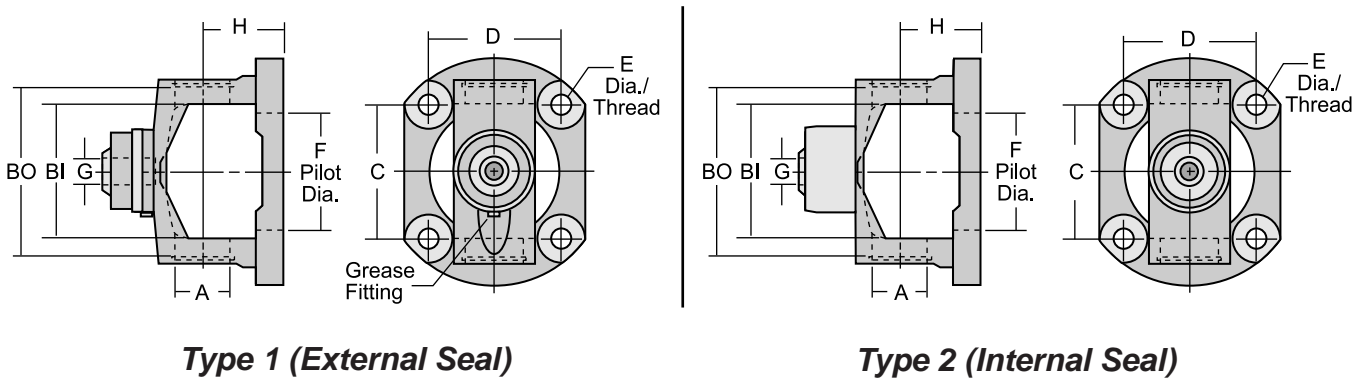
R2-21-3124	Type 1	1.063	3.217-O	2.938	2.662	.453	3.125-F	.500	1.625	404-0
R2-21-1452	Type 1	1.063	3.217-O	3.000	3.000	.453	3.125-F	.500	1.625	404-0

*Early Style Bolt Pattern

*R3R-21-482 Bolt Pattern



CV CENTERING ASSEMBLY (Flanged Yoke Style)

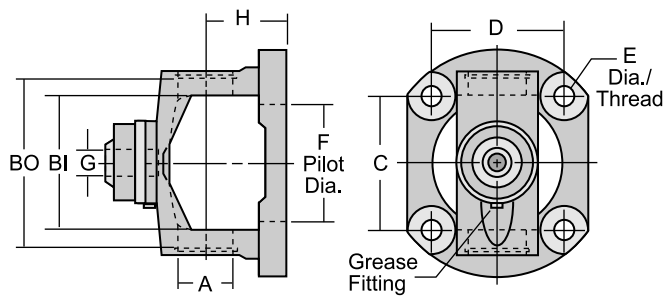


Type 1 (External Seal)

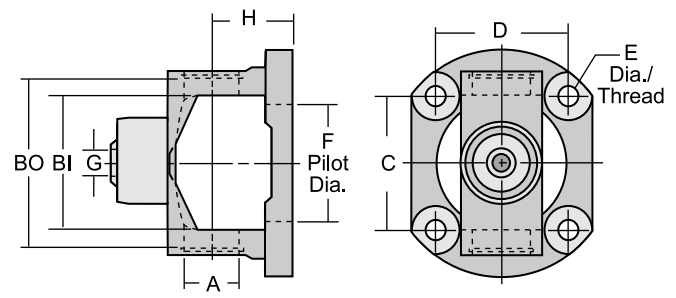
Type 2 (Internal Seal)

RDL Part No.	Yoke Type	A Bearing Dia.	BO/BI U-Joint Lockup	Bolt Hole Dim.			F Pilot Dia.	G Socket Dia.	H CL to Flng End	Repair Kit
				C	D	E				
1310 Series (Suzuki Conversions)										
Use RDL Kit - K153										
R2-21-3162	Type 1	1.063	3.217-O	2.210	2.210	.328	1.770-M	.500	1.625	404-0
R2-21-3167**	Type 1	1.063	3.217-O	2.360	2.360	.328	1.770-M	.500	1.625	404-0
*Samuri With 3.120 Bolt Circle										
*Samuri With 3.330 Bolt Circle										
1310 Series (Toyota Conversions)										
Use RDL Kit - K153										
R2-21-3116	Type 1	1.063	3.217-O	2.360	2.360	.410	1.809-M	.500	1.625	404-0
*3.340 Bolt Circle - Ref. R25-2-3143										
R2-21-3123	Type 1	1.063	3.217-O	2.596	2.596	.445	1.809-M	.500	1.625	404-0
*3.670 Bolt Circle - Ref. R25-2-3144										
R2-21-3114	Type 1	1.063	3.217-O	2.696	2.364	.328	1.809-M	.500	1.625	404-0
*3.575 Bolt Circle - Ref. R25-2-3138										
R2-21-3174	Type 1	1.063	3.217-O	2.696	2.364	.394	1.809-M	.500	1.625	404-0
*3.575 Bolt Circle - Ref. R25-2-3142										
R2-21-3115	Type 1	1.063	3.217-O	2.750	2.426	.394	1.809-M	.500	1.625	404-0
*3.670 Bolt Circle - Ref. R25-2-3140										
1330 Series										
Use RDL Kit - K1203 or K213										
R2-21-1606	Type 1	1.063	3.622-O	2.953	2.656	.453	3.125-F	.500	1.625	404-0
R2-21-1520	Type 1	1.063	3.622-O	2.953	2.656	.453	3.125-F	.625	1.625	405-0
R2-21-1631	Type 2	1.063	3.622-O	3.000	3.000	M12x1.75	2.000-F	.500	1.625	404-0A
R2-21-1868	Type 2	1.063	3.622-O	3.000	3.000	.453	3.125-F	.500	1.625	404-0A

CV CENTERING ASSEMBLY (Flanged Yoke Style)



Type 1 (External Seal)



Type 2 (Internal Seal)

RDL Part No.	Yoke Type	A Bearing Dia.	BO/BI U-Joint Lockup	Bolt Hole Dim.			F Pilot Dia.	G Socket Dia.	H CL to Flng End	Repair Kit
				C	D	E				

3R Series

Use RDL Kit - K3147

R3R-21-3124	Type 2	1.125	2.560-I	2.643	2.933	.453	3.125-F	1.111	1.705	403-0
R3R-21-627	Type 2	1.125	2.560-I	3.000	3.000	.413	3.125-F	1.111	1.705	403-0
R3R-21-482	Type 2	1.125	2.560-I	3.000	3.000	.453	3.125-F	1.111	1.705	403-0

1350 Series

Use RDL Kit - K178

R3-21-2024	Type 2	1.188	3.622-O	3.000	3.000	M12x1.75	2.000-F	.500	1.625	404-0A
R3-21-2025	Type 2	1.188	3.622-O	3.000	3.000	M12x1.75	2.688-F	.500	1.625	404-0A
R3-21-3281	Type 2	1.188	3.622-O	3.000	3.000	.453	3.125-F	.500	1.625	404-0A

1350 Series (Conversion)

Use RDL Kit - K178

R3-21-3136	Type 2	1.188	3.622-O	2.478	2.478	.484	2.000-F	.500	1.625	404-0A
------------	--------	-------	---------	-------	-------	------	---------	------	-------	--------

*3.500 Bolt Circle - Ref. R2-21-1229

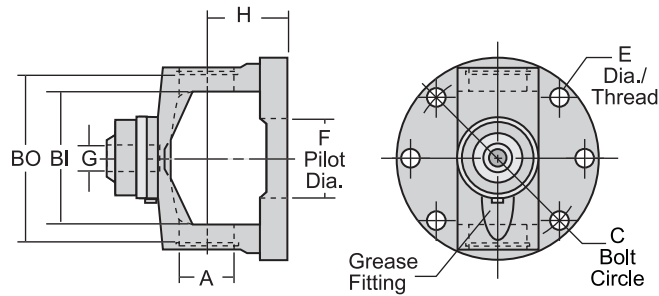
1355 Series (AAM - Saginaw Style Ball Kit)

Use RDL Kit - K178

R3-21-7324	Type 2	1.188	3.622-O	3.000	3.000	M12x1.75	2.000-F	1.111	2.000	403-0
------------	--------	-------	---------	-------	-------	----------	---------	-------	-------	-------



CV CENTERING ASSEMBLY (Flanged Yoke Style - 8 Hole)



Type 1 (External Seal)

RDL Part No.	Yoke Type	A Bearing Dia.	BO/BI U-Joint Lockup	C Bolt Hole Dim.	D Bolt Hole Dim.	E Bolt Hole Dim.	F Pilot Dia.	G Socket Dia.	H CL to Flng End	Repair Kit
--------------	-----------	----------------	----------------------	------------------	------------------	------------------	--------------	---------------	------------------	------------

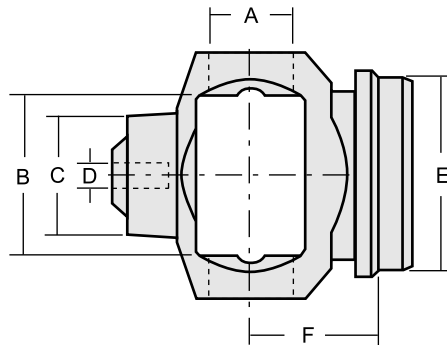
1310 Series (Wrangler Conversion)

Use RDL Kit - K153

R2-21-3108**	Type 1	1.063	3.217-O	3.390	-	.335	1.338-F	.500	1.609	404-0
--------------	--------	-------	---------	-------	---	------	---------	------	-------	-------

*3.390 Bolt Circle - Ref. [363-80 8 Hole High Speed CV Joint](#)

CV CENTERING ASSEMBLY (Weld Yoke Style)



RDL Part No.	A Bearing Dia.	B U-Joint Lockup	C Hub Dia.	D Socket Dia.	Fits Tube Size	E Butt Dia.	F CL to Weld	Repair Kit
--------------	----------------	------------------	------------	---------------	----------------	-------------	--------------	------------

2.5R Series (Toyota)

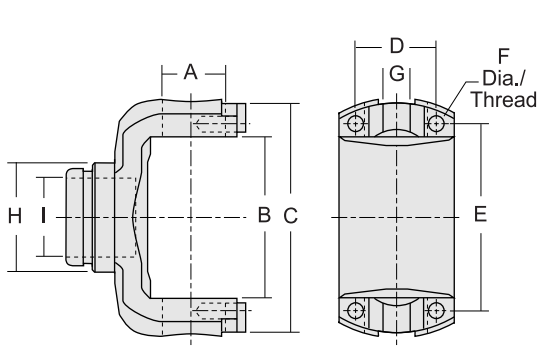
Use RDL Kit - K2532

R25-21-522	1.125	2.125	1.575	.844	—	1.625-F	1.850	512-0
R25-21-3145	1.125	2.125	1.600	.470	2.00 x .120	1.770	1.515	407-0
R25-21-3146	1.125	2.125	1.600	.470	2.50 x .083	2.344	1.515	407-0
R25-21-419	1.125	2.125	1.600	.470	65mm X 3mm	2.437	1.515	407-0
R25-21-419BG**	1.125	2.125	1.600	.470	65mm X 3mm	2.437	1.515	*407-0BG
R25-21-3147	1.125	2.125	1.830	.511	2.00 x .120	1.770	1.515	409-0
R25-21-3148	1.125	2.125	1.830	.511	2.50 x .083	2.344	1.515	409-0
R25-21-420	1.125	2.125	1.830	.511	65mm X 3mm	2.437	1.515	409-0
R25-21-420BG**	1.125	2.125	1.830	.511	65mm X 3mm	2.437	1.515	*409-0BG

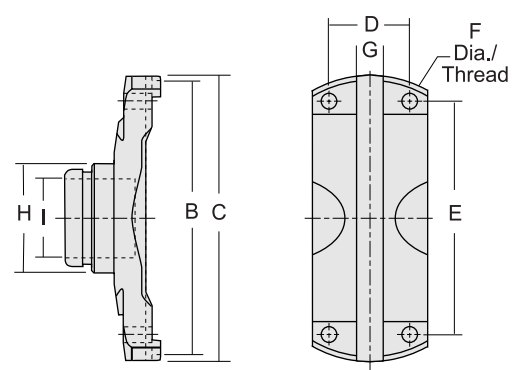
** New addition to MC0118-1 catalog

* See Bronze Advantage on Page 10

CV HOUSING YOKES (Borg-Warner Style)



Type 1 (Round Bearings)



Type 2 (Block Bearings)

RDL Part No.	Yoke Type	A Bearing Dia.	B U-Joint Lockup	C Swing Dia.	Bolt Hole Dim.			G Key Width	H Socket Dia. (OD)	I Socket Dia. (ID)	Repair Kit
					D	E	F				

5R Series

Use RDL Kit - 505-10

R5R-21-525	Type 1	1.312	3.313	4.780	1.687	3.871	.375-24Thd	.558	2.252	1.625	516-0
------------	--------	-------	-------	-------	-------	-------	------------	------	-------	-------	-------

6C Series

Use RDL Kit - 506-10

R6C-21-526	Type 2	—	5.530	5.840	1.687	4.494	.375-24Thd	.560	2.252	1.625	516-0*
------------	--------	---	-------	-------	-------	-------	------------	------	-------	-------	--------

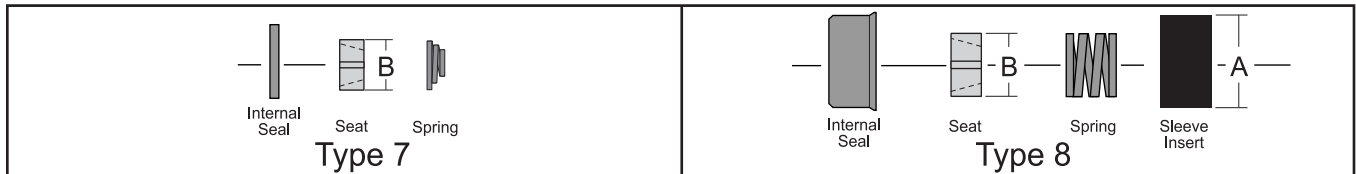
7R Series

Use RDL Kit - 507-10

R7R-21-527	Type 1	1.625	4.375	6.563	2.188	5.146	.500-20Thd	1.000	2.502	1.875	517-0
------------	--------	-------	-------	-------	-------	-------	------------	-------	-------	-------	-------

*Note: On 6C applications used for constant speed applications the 518-0 should be used

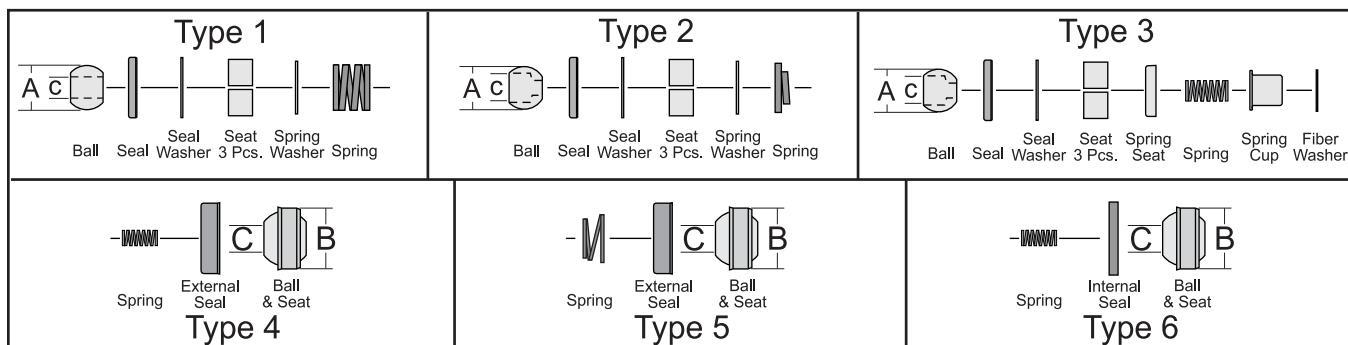
CV REPAIR KITS (Borg-Warner)



RDL Part No.	Kit Type	A Sleeve Outside Dia.	B Sleeve Inside Dia.	C Gimble Diameter	Reference Notes
--------------	----------	-----------------------	----------------------	-------------------	-----------------

512-0	Type 7	—	—	1.027	2.5R Series
516-0	Type 8	2.500	2.249	1.621	5R/6C Series (200 Lb. Spring)
518-0	Type 8	2.500	2.249	1.621	6C Series (80 Lb. Spring)
517-0	Type 8	2.725	2.499	1.870	7R Series

Note: On 6C applications the lighter spring is used for constant speed applications.



RDL Part No.	Kit Type	A Ball Diameter	B Gimble Diameter	C Socket Diameter	Top Seal Diameter	Reference Notes
403-0	Type 1	.906	—	.457		Saginaw - (W/ Ball)
403-0A	Type 1	—	—	—		Saginaw - (W/O Ball)
403-01	Type 2	.875	—	.598		Saginaw - (W/ Ball)
403-01A	Type 2	—	—	—		Saginaw - (W/O Ball)
403-02	Type 3	.875	—	.598		Saginaw - (W/ Ball)
403-02A	Type 3	—	—	—		Saginaw - (W/O Ball)
403-02S	Type 1	.906	—	.457		Saginaw - (W/ Ball & Short Spring)
403-03	Type 1	.906	—	.625		Saginaw - (W/ Ball)
404-0	Type 4	—	1.252	.500		Spicer - (Early)
404-0A	Type 6	—	1.252	.500		Spicer - (Late)
405-0	Type 5	—	1.252	.625		Spicer - (Early)
407-0	Type 6	—	1.340	.470	1.420-OD	Toyota - (1st Design)
407-0A**	Type 6	—	1.340	.470	1.488-OD	Toyota - (Koyo OSR Design)
409-0	Type 6	—	1.456	.511	1.525-OD	Toyota - (2nd Design)
BG404-0**	Type 4	—	1.252	.500		*Bronze Gimble - Spicer (Early)
BG404-0A**	Type 6	—	1.252	.500		*Bronze Gimble - Spicer (Late)
BG405-0**	Type 5	—	1.340	.625		*Bronze Gimble - Spicer (Early)
BG407-0**	Type 6	—	1.340	.511	1.420-OD	*Bronze Gimble - Toyota - (1st Dsgn)
BG407-0A**	Type 6	—	1.340	.470	1.488-OD	*Bronze Gimble - Toyota - (Koyo OSR)
BG409-0**	Type 6	—	1.456	.511	1.525-OD	*Bronze Gimble - Toyota - (2nd Dsgn)

*Bronze Advantages

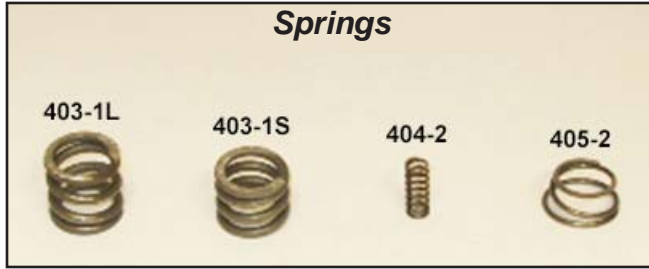
Material selection is always a trade-off of various factors including, mechanical properties, processing cost, material availability and physical properties. Selecting a bronze alloy for your application can provide many benefits including:

Corrosion Resistance - By forming a protective surface film, most copper alloys resist many corrosive environments

Withstand High Temperatures - Several families of bronze alloys work well in elevated temperature environments

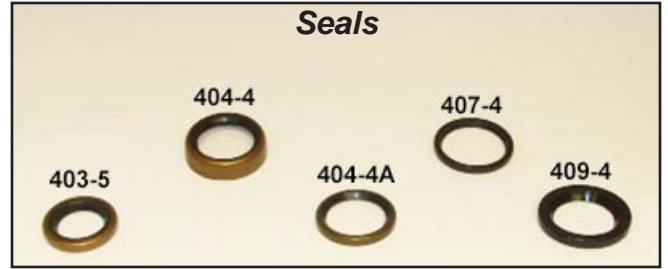
Friction and Wear - Copper alloys wear well against steel and are used in numerous bearing and gear components

SMALL PARTS



Springs

- 403-1S -Saginaw CV Spring - Short .750 x
- 403-1L -Saginaw CV Spring - Long .850 x
- 404-2 -Spicer/Toyota CV Spring -
- 405-2 -Spicer CV Spring -



Seals

- 403-5 -Saginaw Top Seal
- 404-4 -Spicer External Top Seal
- 404-4A -Spicer Internal Top Seal
- 407-4 -Toyota Top Seal -1.420 OD
- 407-4A -Toyota Top Seal (Koyo) -1.480 OD (Not Pictured)
- 409-4 -Toyota Top Seal -1.525 OD



Dust Shields

- 410-2 -Stud Yoke Seal -Saginaw (Spot Weld)
- 411-2 -Stud Yoke Seal -Spicer type 1 (Steel)
- 412-2 -Stud Yoke Seal -Spicer type 2 (Rubber)
- 415-2 -Stud Yoke Seal -Toyota (Steel)
- 415E-15 -Stud Yoke Seal -Toyota (Rubber)



Grease Fittings

- 400-4 -1/4-28 Straight Zerk
- 400-4A -1/4-28 90° Zerk
- 400-4B -1/4-28 65° Zerk
- 400-4C -1/4-28 Flush Zerk (Hex Head)



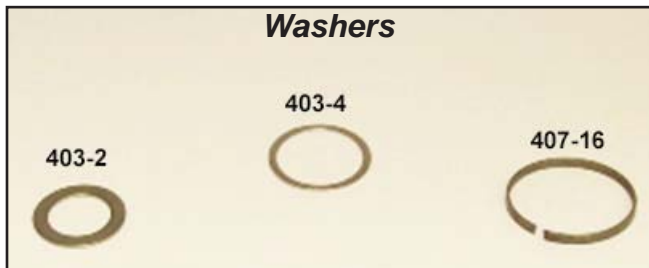
Liners/Hubs

- 401-0 -Yoke Shoulder Rebuild Hub- use with 401-1
- 401-1 -Yoke Liner 1.430 tall
- 401-1S -Yoke Liner Short 1.160 tall



Balls

- 403-6 -OD 0.906 / ID 0.457
- 403-6B -OD 0.906 / ID 0.625
- 403-6C -OD 0.875 / ID 0.598



Washers

- 403-2 -Ball Seat Support Washer- Saginaw Repair Kits
- 403-4 -Seal Support Washer- Saginaw Repair Kits
- 407-16 -Adapter Ring Converts 407-4 to 1.480 OD



Ball Seat Segments

- 403-3 -Set (3) Segments -From 403-0, 403-0A & 403-03
- 403-3EA -Individual (1) Segment- Used in 403-3 Set
- 403-3A -Set (3) Segments -From 403-01, 403-01A, 403-02 & 403-02A
- 403-A -Individual (1) Segment- Used in 403-3A Set



PART NUMBER INTERCHANGE LIST

MFG. NO.	OUR NO.	MFG. NO.	OUR NO.
Neapco		Powertrain Industies (cont.)	
2-9201	403-0A	3102-231CV	R2-21-3517
2-9203	403-01A	3102-251CV	R2-21-3191
2-9205	403-02A	3102-392CV	R2-21-3108
2-9302	403-0	3325-50	404-0A
2-9303	403-01	3502-21	R3-21-2024
2-9305	403-02	3502-42	R3-21-2025
7-0081	404-0	3502-312CV	R3-21-3281
7-0081 NG	404-0A	3R02-311CV	R3R-21-482
7-0041	R2-21-0841	3R02-391CV	R3R-21-3124
7-0042	R2-21-1342	3R25-20	403-0
7-0079	R2-21-1179	Rockford (Old Numbers)	
7-0079NG	R2-21-1996	404	R2-21-1355
7-0082	R2-21-1355	404A	R2-21-1229
7-0082NG	R2-21-1544	404B	R2-21-1544
7-0407	407-0	405	R2-21-0841
7-0409	409-0	406	R2-21-1179
N2-83-388X	R2-21-1229	406AC	R2-21-1868
N2-83-288X	R2-21-1489	406AF	R2-21-1631
N2-83-288-1X	R2-21-3114	406B	R2-21-1996
N2-83-489X	R2-21-1489	406TJ	R2-21-1606
N2-83-543X	R2-21-1543	408	R2-21-1342
N2-83-631X	R2-21-1631	408A	R2-21-1489
N2-83-913X	R2-21-1868	409	R3-21-2019
N2-86-418	412-2	419	R25-21-419
N3-83-019X	R3-21-2019	420	R25-21-420
N3-83-024X	R3-21-2024	483	R2-21-3124
N3-83-025X	R3-21-2025	483T	R2-21-3114
N3-83-3281X	R3-21-3184	484	R2-21-1452
N3-83-3281X	R3-21-3281	490A	R3R-21-482
N3R-83-482	R3R-21-482	522	R25-21-522
N3R-83-627	R3R-21-627	525	R5R-21-525
Powertrain Industies		526	R6C-21-526
1325-12	407-0	527	R7R-21-527
1325-13	409-0	Spicer	
3102-171CV	R2-21-3167	2-86-418	412-2
3102-172CV	R2-21-3162	210476-1X	405-0
3102-181CV	R2-21-3114	211407X	407-0
3102-182CV	R2-21-3115	210841X	R2-21-0841
3102-183CV	R2-21-3116	211007X	403-0A
3102-184CV	R2-21-3123		

PART NUMBER INTERCHANGE LIST



MFG. NO.	OUR NO.	
Spicer (cont.)		
211009X	403-0	
211010X	403-01A	
211011X	403-01	
211012X	403-02A	
211013X	403-02	
211179X	R2-21-1179	
211229X	R2-21-1229	
211342X	R2-21-1342	
211355X	R2-21-1355	
211452X	R2-21-1452	
211489X	R2-21-1489	
211520X	R2-21-1520	
211543X	R2-21-1543	
211544X	R2-21-1544	
211545X	R2-21-1452	
211606X	R2-21-1606	
211631X	R2-21-1631	
211868X	R2-21-1868	
211889X	R2-21-1606	
211931X	R2-21-1868	
211996X	R2-21-1996	
212019X	R3-21-2019	
212024X	R3-21-2024	
212025X	R3-21-2025	



PART NUMBER INDEX

PART NUMBER.....PG	PART NUMBER.....PG
400-4.....11	412-2.....11
400-4A.....11	415-2.....11
400-4B.....11	415E-15.....11
400-4C.....11	BG404-0**.....10
401-0.....11	BG404-0A**.....10
401-1.....11	BG405-0**.....10
401-1S.....11	BG407-0**.....10
403-0.....10	BG407-0A**.....10
403-0A.....10	BG409-0**.....10
403-01.....10	512-0.....9
403-01A.....10	516-0.....9
403-02.....10	517-0.....9
403-02A.....10	518-0.....9
403-02S.....10	R2-21-0841.....4
403-03.....10	R2-21-1179.....4
403-1L.....11	R2-21-1229.....5
403-1S.....11	R2-21-1229LH.....5
403-2.....11	R2-21-1342.....4
403-3.....11	R2-21-1355.....4
403-3A.....11	R2-21-1452.....5
403-3EA.....11	R2-21-1489.....5
403-4.....11	R2-21-1489LH.....5
403-5.....11	R2-21-1520.....6
403-6.....11	R2-21-1543.....5
403-6B.....11	R2-21-1544.....4
403-6C.....11	R2-21-1606.....6
403-A.....11	R2-21-1631.....6
404-0.....10	R2-21-1868.....6
404-0A.....10	R2-21-1996.....4
404-2.....11	R2-21-3108**.....8
404-4.....11	R2-21-3114.....6
404-4A.....11	R2-21-3115.....6
405-0.....10	R2-21-3116.....6
405-2.....11	R2-21-3123.....6
407-0.....10	R2-21-3123LH.....5
407-0A**.....10	R2-21-3124.....5
407-4.....11	R2-21-3162.....6
407-4A.....11	R2-21-3162LH.....5
407-16.....11	R2-21-3167**.....6
409-0.....10	R2-21-3174.....6
409-4.....11	R2-21-3191.....5
410-2.....11	R2-21-3517.....5
411-2.....11	R25-21-419.....8

PART NUMBER INDEX



PART NUMBER.....PG	
R25-21-419BG**	8
R25-21-420.....	8
R25-21-420BG**	8
R25-21-522.....	8
R25-21-3145	8
R25-21-3146	8
R25-21-3147	8
R25-21-3148	8
R3-21-2019.....	4
R3-21-2024.....	7
R3-21-2025.....	7
R3-21-3136.....	7
R3-21-3184.....	Discontinued
R3-21-3281.....	7
R3-21-7324.....	7
R3R-21-482.....	7
R3R-21-627.....	7
R3R-21-3124	7
R5R-21-525.....	9
R6C-21-526	9
R7R-21-527.....	9

** New addition to MC0118-1 catalog

MANUFACTURER and SUPPLIER OF
DRIVELINE & CONSTANT VELOCITY COMPONENTS
FOR ALL TERRAIN AND UTILITY VEHICLES

1500 11TH AVE ROCKFORD, ILLINOIS 61104
PHONE (815)962-1411 FAX (815)965-4857

MotorMasterPowersports.com
RockfordDriveLine.com